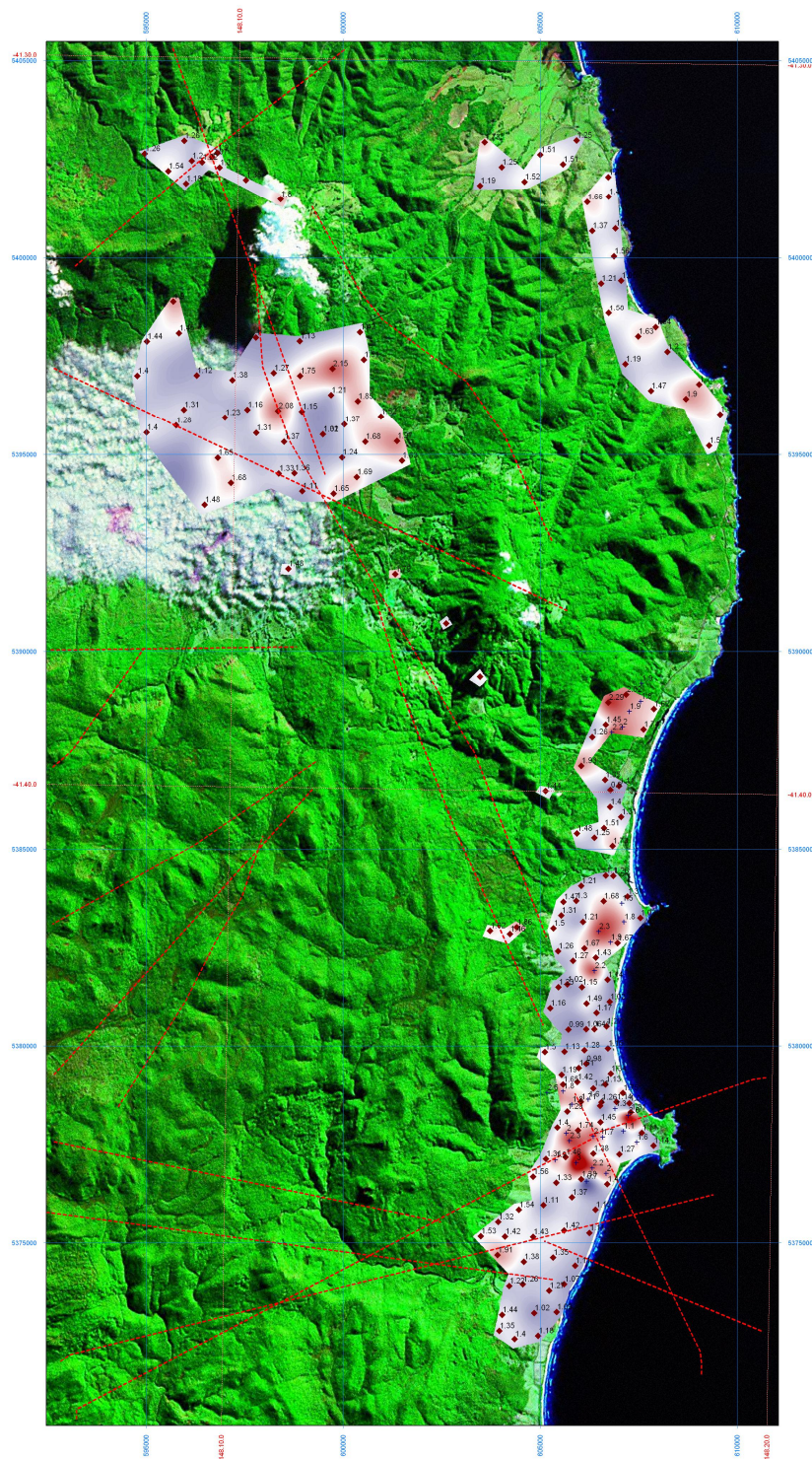


Compounds in summation:  
butane  
pentane  
methylcyclopentane  
cyclohexane  
methylcyclohexane  
cycloheptane  
heptane  
octane  
decane  
undecane  
dodecane  
tridecane  
tetradecane  
pentadecane  
hexadecane  
heptadecane  
octadecane



logTAS with infill <Client focus survey area>

Color Filled Contour

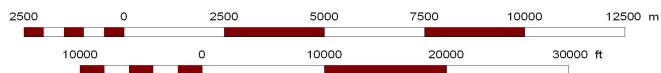
Log mass value



Infill Locations



Geochemical Sample Location



1:100000



W.L. Gore & Associates, Inc.  
100 Chesapeake Boulevard  
Elkton, MD 21921 USA  
Phone: +1-410-392-7600

**GORE® Survey for Exploration  
Amplified Geochemical Imaging<sup>SM</sup> Service**

**E&P INVESTMENTS AUSTRALIA PTY LTD  
Brighton, Victoria**

**EXPLORATION BLOCK EL58/2008  
Onshore Eastern Tasmania**

**TOTAL ALKANE MASS RESPONSE**

Summation of C4 – C18 alkanes and cyclic alkanes, from butane to octadecane (excluding nonane), log base 10 transformed  
Infill sample data included in the contour data surface  
Coordinate System: AMG 55 WGS84, meters

Sample number shown below location, log sum mass shown above right  
©2011 W. L. Gore & Associates, Inc. GORE is a registered trademark and service mark of W. L. Gore & Associates, Inc.

Date: 28 Mar 2011	Drawn By: AHS	Filename: logTAS Project #: 15254300	Rev #1 Rev Date 032811
----------------------	------------------	--	---------------------------